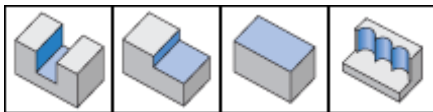
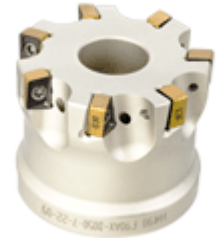
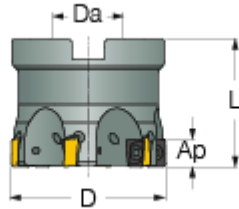




H490 F90AX-09 : 90° face mills using the H490 ANKX 09.. double-sided rectangular inserts with 4 helical cutting edges (HELIDO 490)



Designation	D	Z	ap	Da	L	Arbor	Kg
H490 F90AX D032-4-16-09	32.00	4	8.00	16.00	35.00	A	0.24
H490 F90AX D032-5-16-09	32.00	5	8.00	16.00	35.00	A	0.25
H490 F90AX D040-5-16-09	40.00	5	8.00	16.00	40.00	A	0.12
H490 F90AX D040-6-16-09	40.00	6	8.00	16.00	40.00	A	0.12
H490 F90AX D050-6-22-09	50.00	6	8.00	22.00	40.00	A	0.71
H490 F90AX D050-7-22-09	50.00	7	8.00	22.00	40.00	A	0.73
H490 F90AX D063-8-22-09	63.00	8	8.00	22.00	40.00	A	0.62
H490 F90AX D063-9-22-09	63.00	9	8.00	22.00	40.00	A	0.23