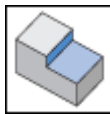
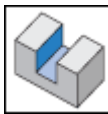
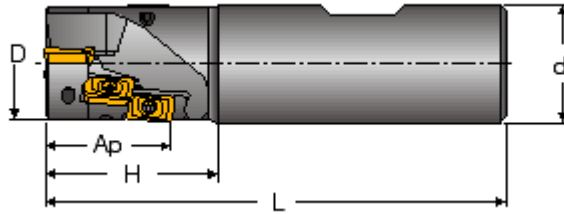




HP ANK-07 : Extended flute endmills with HELIPLUS HP ANK-07... inserts.



Designation	D	Z	Flute	ap	H	L	d	Shank	Kg
HP ANK D16-21-01-W16-7	16.00	3	1	21.60	30.00	80.00	16.00	W	0.15
HP ANK D16-14-02-W16-7	16.00	4	2	14.60	25.00	75.00	16.00	W	0.13
HP ANK D20-21-02-W20-7	20.00	6	2	21.60	30.00	80.00	20.00	W	0.16
HP ANK D20-28-02-W20-7	20.00	8	2	28.60	40.00	90.00	20.00	W	0.15
HP ANK D25-28-03-W25-7	25.00	12	3	28.60	40.00	100.00	25.00	W	0.44
HP ANK D32-35-04-W32-7	32.00	20	4	35.50	45.00	110.00	32.00	W	0.45

For adaptation, click on "More Info".