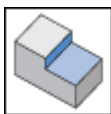
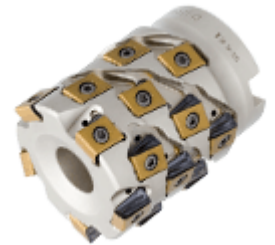
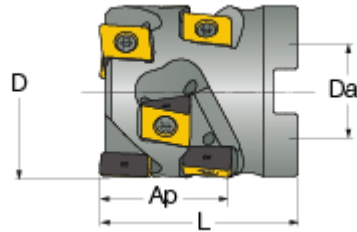




T490 SM-13 : Extended flute shell mills with T490 LNMT/HT 1306... tangentially clamped inserts (HELITANG T490 Line).



Designation	D	ap	L	Flute	Z	Da	Arbor	Kg
T490 SM-D40-24-2-22-13	40.00	24.00	50.00	2	4	22.00	A	0.32
T490 SM-D40-36-3-22-13	40.00	36.00	62.00	3	9	22.00	A	0.29
T490 SM-D50-36-2-27-13	50.00	36.00	56.00	2	6	27.00	A	1.20
T490 SM-D50-36-3-27-13	50.00	35.90	56.00	3	9	27.00	A	0.30
T490 SM-D50-36-3-25.4-13	50.00	36.00	60.00	3	9	25.40	A	0.49
T490 SM-D50-47-4-27-13	50.00	47.00	68.00	4	16	27.00	A	1.10
T490 SM-D50-47-4-25.4-13	50.00	47.00	72.00	4	16	25.40	A	1.18
T490 SM-D63-36-4-27-13	63.00	36.00	60.00	4	12	27.00	A	0.70
T490 SM-D63-36-4-25.4-13	63.00	36.00	60.00	4	12	25.40	A	1.90
T490 SM-D63-59-5-27-13	63.00	59.00	80.00	5	25	27.00	A	1.41
T490 SM-D63-59-5-25.4-13	63.00	59.00	80.00	5	25	25.40	A	2.28
T490 SM-D80-58-5-32-13	80.00	58.00	75.00	5	25	32.00	A	3.31
T490 SM-D80-70-5-32-13	80.00	70.00	75.00	5	30	32.00	A	3.04
T490 SM-D100-59-6-40-13	100.00	59.00	86.00	6	30	40.00	A	3.50
T490 SM D125-47-7-40-13	125.00	47.00	68.00	7	28	40.00	A	3.28