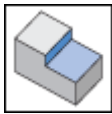
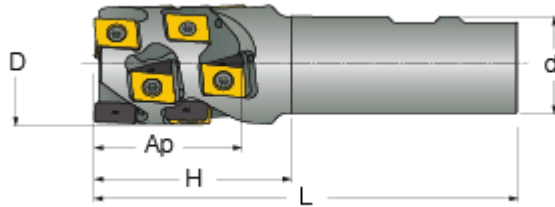




T490 LNK-13 : Extended flute endmills using T490 LNMT/LNHT 13... tangentially clamped inserts with 4 helical, 13 mm long cutting (T490 Line).



	D	Z	Flute	ap	H	L	d	Shank	Kg
T490 LNK-D40-36-2-C32-13	40.00	6	2	36.00	50.00	120.00	32.00	C	1.57
T490 LNK-D40-36-2-W32-13	40.00	6	2	36.00	50.00	115.00	32.00	W	1.57
T490 LNK-D40-48-3-C32-13	40.00	12	3	48.00	65.00	140.00	32.00	C	1.10
T490 LNK-D40-48-3-W32-13	40.00	12	3	48.00	65.00	125.00	32.00	W	1.60
T490 LNK-D50-47-3-W40-13	50.00	12	3	48.00	65.00	135.00	40.00	W	2.18
T490 LNK-D50-47-3-W42-13	50.00	12	3	48.00	65.00	145.00	42.00	W	1.00
T490 LNK-D50-59-4-W40-13	50.00	20	4	59.00	65.00	135.00	40.00	W	2.16
T490 LNK-D50-59-4-W42-13	50.00	20	4	58.60	65.00	145.00	42.00	W	2.31

For adaptation, click on "More Info".