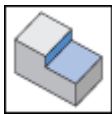
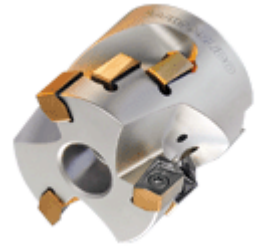
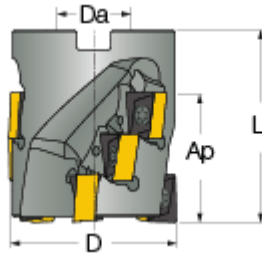




**H490 SM-17** : Extended flute shell mills carrying H490 ANKX 17.. double-sided rectangular inserts with 4 helical cutting edges (HE)



Designation	D	Z	Flute	ap	L	Da	Arbor	Kg
H490 SM D063-48-3-27-17C	63.00	9	3	46.50	70.00	27.00	A	1.08
H490 SM D063-60-3-27-17C	63.00	12	3	58.50	70.00	27.00	A	1.47
H490 SM D080-48-4-32-17C	80.00	12	4	46.50	70.00	32.00	A	1.32
H490 SM D100-64-5-40-17C	100.00	20	5	61.50	85.00	40.00	A	2.50