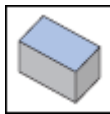
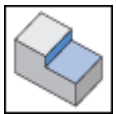
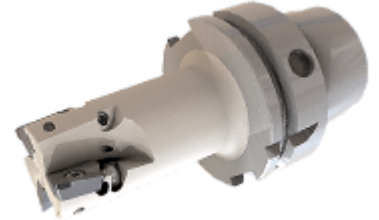
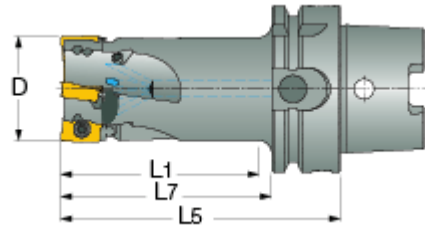




**E90AD-HSK63-S** : Adjustable Endmills (used mainly for PCD/CBN inserts). The adjustable tools provide excellent surface finish and



Designation	D	L1	L5	L7	Z	Shank	RPM max	Kg
E90AD D25-2-L050-HSK63-S	25.00	45.0	76.00	50.00	2	HSK A 63	41900	0.89
E90AD D32-3-L065-HSK63-S	32.00	60.0	91.00	65.00	3	HSK A 63	28900	1.20
E90AD D40-4-L080-HSK63-S	40.00	75.0	106.00	80.00	4	HSK A 63	25800	1.34
E90AD D50-4-L100-HSK63-S	50.00	96.5	106.00	106.00	4	HSK A 63	23000	1.98

A cooling tube must be used with all coolant through HSK spindles (should be ordered separately).