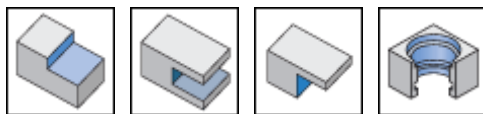
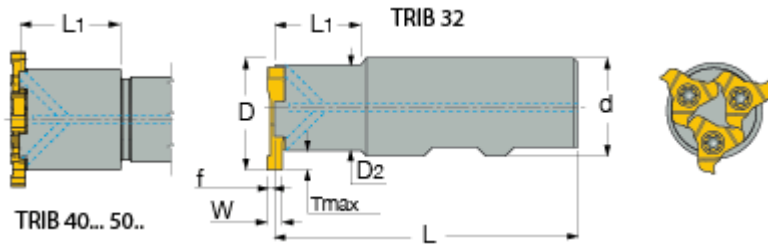




**TRIB** : CHAMSLIT, grooving shell mills with triple-edged precision ground inserts.



Designation	D	W min	W max	D2	d	Z	L1	Shank	L	Kg
TRIB 32-25W-3Z	32.20	1.20	4.00	21.70	25.00	3	52.3	W	110.00	0.26
TRIB 32-25W-3Z-B	32.20	4.01	6.50	21.70	25.00	3	52.3	W	110.00	0.46
TRIB 40-25W-4Z	40.00	1.20	4.00	29.70	25.00	4	30.0	W	110.00	0.50
TRIB 40-25W-4Z-B	40.00	4.01	6.50	29.70	25.00	4	30.0	W	110.00	0.00
TRIB 50-32W-6Z	50.00	1.20	4.00	39.70	32.00	6	30.0	W	110.00	0.83

W, Tmax, f, Refer to insert data

For inserts with W=4.01-6.50 mm, order tools with -B suffix (deeper pockets). For example:

TRIB 50-32W-6Z-B

For adaptation click on "More Info".