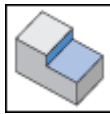
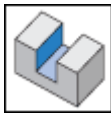
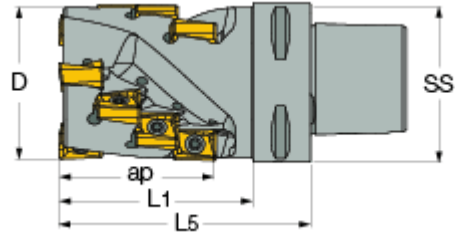




**H490 ANKD-C#** : Extended flute endmills with CAMFIX shanks using the H490 ANKX 17...double-sided rectangular inserts with 4 helix. Used for heavy applications. (HELIDO 490 Line).



Designation	D	ap	Flute	Z	L1	L5	SS	Kg
H490 ANKD63-60-3-17L100C6	63.00	61.00	3	12	77.0	100.00	63	2.40