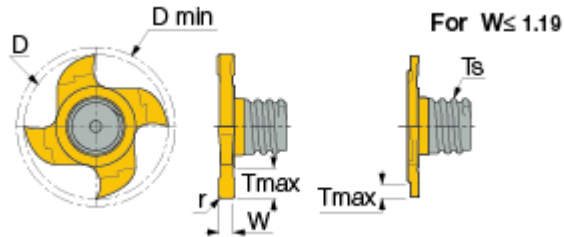
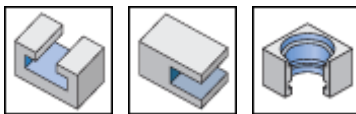




**MM GRIT-22K/P,28K :** MULTI-MASTER interchangeable solid carbide small diameter, groove milling heads. "P" suffix for sharp cutting edge for T-land on cutting edge, to be used on steel and cast iron.



**MM GRIT 28      MM GRIT 22**



Designation	D	W±0.02	r	Tmax	D min	Ts	Z	Grade
MM GRIT 22K-0.76-0.00	21.70	0.76	0.00	1.50	22.00	T08	4	IC528
MM GRIT 22K-0.86-0.00	21.70	0.86	0.00	1.70	22.00	T08	4	IC528
MM GRIT 22K-0.96-0.00	21.70	0.96	0.00	1.90	22.00	T08	4	IC528
MM GRIT 22K-1.00-0.05	21.70	1.00	0.05	2.00	22.00	T08	4	IC528
MM GRIT 22P-1.00-0.05	21.70	1.00	0.05	2.00	22.00	T08	4	IC528
MM GRIT 22K-1.20-0.05	21.70	1.20	0.05	4.50	22.00	T08	4	IC528
MM GRIT 22K-1.40-0.05	21.70	1.40	0.05	4.50	22.00	T08	4	IC528
MM GRIT 22K-1.57-0.00	21.70	1.57	0.00	4.50	22.00	T08	4	IC528
MM GRIT 22K-1.70-0.10	21.70	1.70	0.10	4.50	22.00	T08	4	IC528
MM GRIT 22P-1.70-0.10	21.70	1.70	0.10	4.50	22.00	T08	4	IC528
MM GRIT 22K-1.95-0.20	21.70	1.95	0.20	4.50	22.00	T08	4	IC528
MM GRIT 22K-2.00-0.20	21.70	2.00	0.20	4.50	22.00	T08	4	IC528
MM GRIT 22P-2.00-0.20	21.70	2.00	0.20	4.50	22.00	T08	4	IC528
MM GRIT 22K-2.25-0.20	21.70	2.25	0.20	4.50	22.00	T08	4	IC528
MM GRIT 22K-2.39-0.20	21.70	2.39	0.20	4.50	22.00	T08	4	IC528
MM GRIT 22K-2.50-0.20	21.70	2.50	0.20	4.50	22.00	T08	4	IC528
MM GRIT 22P-2.50-0.20	21.70	2.50	0.20	4.50	22.00	T08	4	IC528
MM GRIT 22K-2.75-0.20	21.70	2.75	0.20	4.50	22.00	T08	4	IC528
MM GRIT 22K-3.00-0.20	21.70	3.00	0.20	4.50	22.00	T08	4	IC528
MM GRIT 22P-3.00-0.20	21.70	3.00	0.20	4.50	22.00	T08	4	IC528
MM GRIT 22K-3.17-0.20	21.70	3.17	0.20	4.50	22.00	T08	4	IC528
MM GRIT 22K-3.25-0.20	21.70	3.25	0.20	4.50	22.00	T08	4	IC528
MM GRIT 22P-3.81-0.20	21.70	3.81	0.20	4.50	22.00	T08	4	IC528
MM GRIT 22K-4.00-0.20	21.70	4.00	0.20	4.50	22.00	T08	4	IC528
MM GRIT 22P-3.98-0.20	21.70	3.98	0.20	4.50	22.00	T08	4	IC528
MM GRIT 22P-4.00-0.20	21.70	4.00	0.20	4.50	22.00	T08	4	IC528
MM GRIT 22P-4.00-2.00	21.70	4.00	2.00	4.50	22.00	T08	4	IC528

MM GRIT 22K-4.25-0.20	21.70	4.25	0.20	4.50	22.00	T08	4	IC528
MM GRIT 22K-4.25-1.20	21.70	4.25	1.20	4.50	22.00	T08	4	IC528
MM GRIT 22K-4.75-0.20	21.70	4.75	0.20	4.50	22.00	T08	4	IC528
MM GRIT 22K-5.25-0.20	21.70	5.25	0.20	4.50	22.00	T08	4	IC528
MM GRIT 22K-6.00-3.00	21.70	6.00	3.00	4.50	22.00	T08	4	IC528
MM GRIT 28K-2.50-0.2	27.70	2.50	0.20	6.00	28.00	T10	6	IC528
MM GRIT 28K-5.25-0.2	27.70	5.25	0.20	6.00	28.00	T10	6	IC528
MM GRIT 28K-10.0-0.2	27.70	10.00	0.20	6.00	28.00	T10	6	IC528

MM EGR 20-22 clamping key is supplied with each MM GRT... shank, tightening torque: 1500 N.cm.

MM GRIT 28 clamping key should be ordered separately, tightening torque:2800 Nxcn.

For clamping instructions, click on "More Info".

Modification options on request.

Recommended for O-rings and retaining rings.

Do not apply lubricant to the threaded connection.